



GAT MONTHLY MEMBERSHIP PROGRESS REPORT

Results as of: 5/31/2022

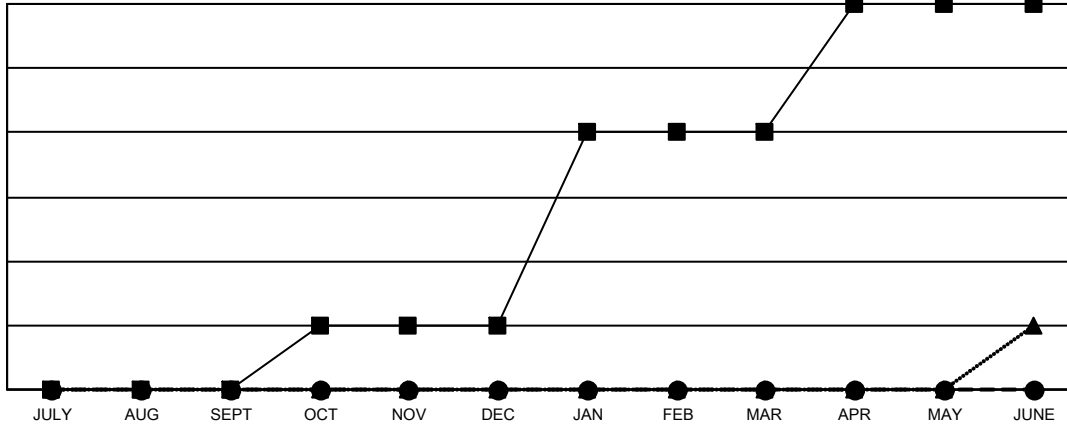
Multiple District 24

LOCATION: VIRGINIA

| Clubs | | | |
|-----------------------|---------------|-----------|---------------|
| RESULTS FOR 2021-2022 | | | |
| QUARTER | NEW CLUB GOAL | NEW CLUBS | DROPPED CLUBS |
| JULY/AUG/SEPT | 0 | 0 | 5 |
| OCT/NOV/DEC | 1 | 0 | 0 |
| JAN/FEB/MAR | 3 | 0 | 3 |
| APR/MAY/JUNE | 2 | 0 | 0 |

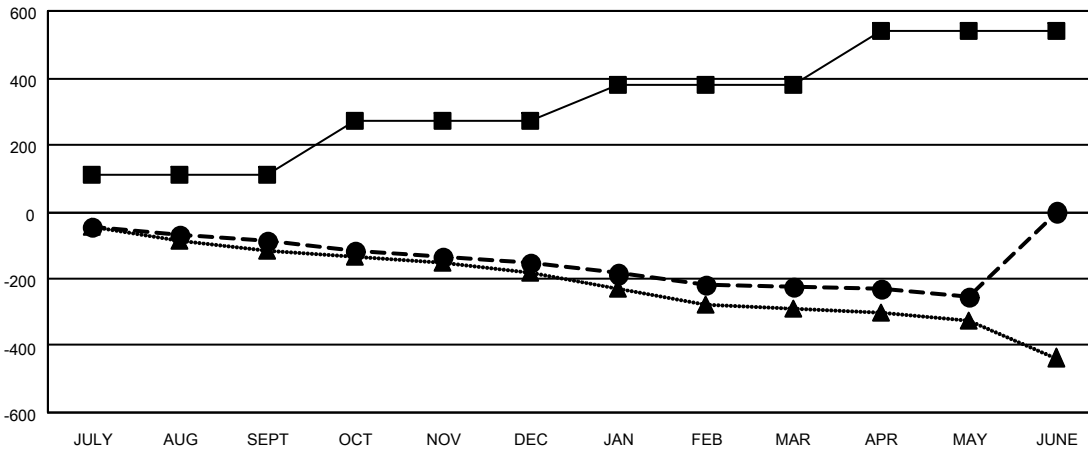
| Members | | | |
|-----------------------|------------------------|----------------------|--|
| RESULTS FOR 2021-2022 | | | |
| QUARTER | MEMBER GROWTH NET GOAL | MEMBER GROWTH ACTUAL | DROPPED MEMBERS ACTUAL (including transfers) |
| JULY/AUG/SEPT | 110 | 172 | 225 |
| OCT/NOV/DEC | 160 | 114 | 167 |
| JAN/FEB/MAR | 110 | 122 | 174 |
| APR/MAY/JUNE | 160 | 73 | 95 |

GOALS AND ACTUAL NEW CLUBS CUMULATIVE



- CURRENT YEAR GOALS FOR NEW CLUBS
- CURRENT YEAR ACTUAL NEW CLUBS
- ▲- LAST YEAR ACTUAL NEW CLUBS

GOALS AND ACTUAL MEMBERS CUMULATIVE



- MEMBER GROWTH NET GOAL
- MEMBER GROWTH ACTUAL
- ▲- LAST YEAR MEMBERSHIP ACTUAL

| | | |
|-------------------------|---|--|
| DROPPED CLUBS: 8 | 126 CLUBS OF 243 ADDED 1 OR MORE NEW MEMBERS | GENDER DISTRIBUTION |
| DROPPED MEMBERS | CLICK HERE FOR CUMULATIVE MEMBERSHIP DATA | MALE 3,608 (64.13%) |
| DECEASED 123 | | FEMALE 2,018 (35.87%) |
| CLUB CANCELLED 54 | | NON BINARY 0 (0.00%) |
| OTHER 483 | | PREFER NOT TO ANSWER 0 (0.00%) |
| TOTAL 660 | | TOTAL FAMILY UNIT MEMBERS 955 |
| | | FAMILY MEMBERS PAYING HALF DUES 481 |